


Update for FBox Client

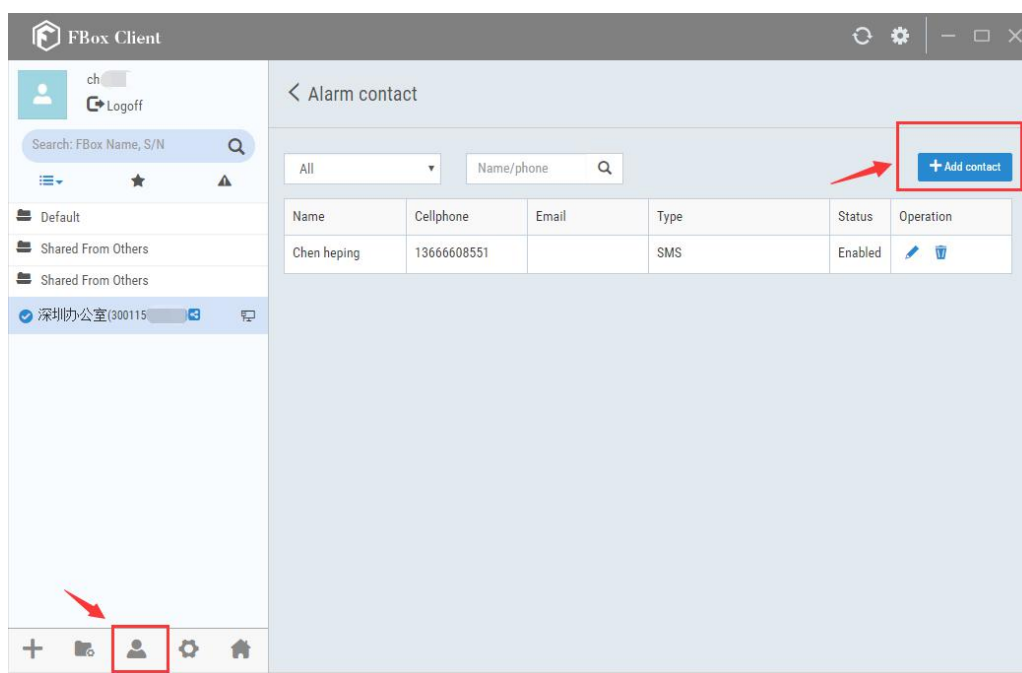
1. Email alarming
2. Alarm contacts setting up to global settings
3. FBox diagnose, you can check online and offline recording and logging process recording
4. Batch FBox adding CSV files modules

Email alarming, batch lead in module ave been added in this FBox Client Updating. Alarm contacts and FBox online and offline recording location have been modified.

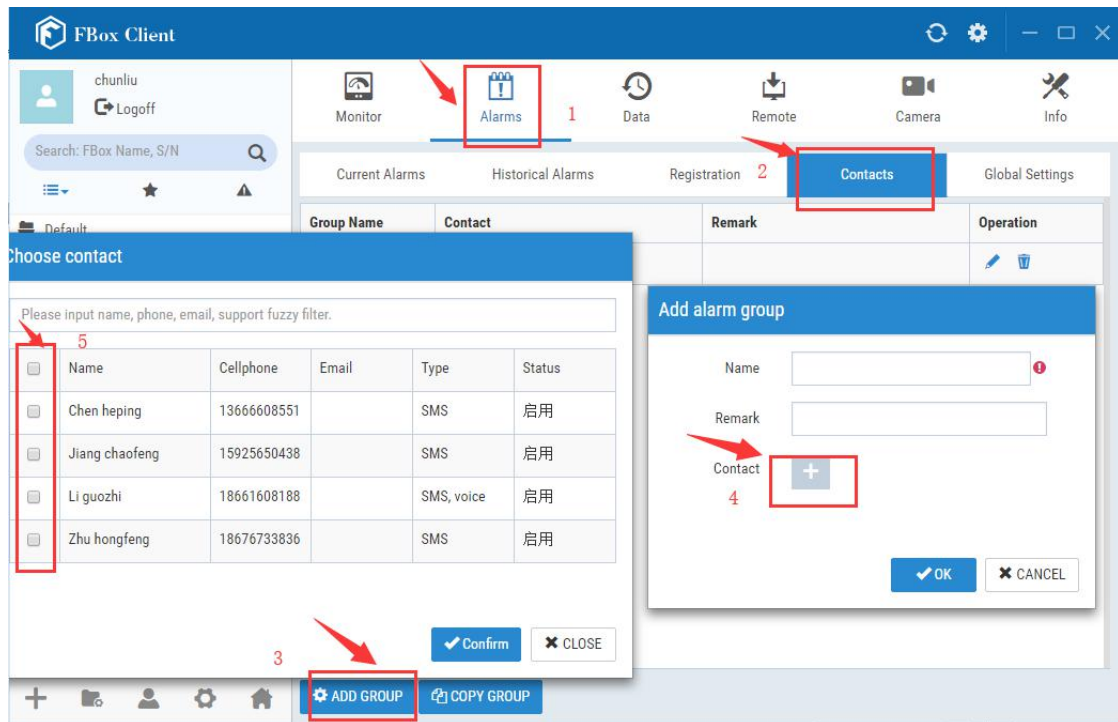
Alarm Contacts:

Individual FBox adding alarm contacts option has been added in updating Client. Alarm contacts has been added in global setting.

First you need click below  option on the left, after click adding contacts option on the right. Please fill concerned information about alarm contacts in the popping up label page, input email defaults email alarming functions. Alarming type can click SMS or VOICE, click "START" option after filling concerned information, at last click "Confirm" to quit.



The actual FBox adding alarm contacts way is exact same with previous way. Fill concerned info in newly adding group, click the alarm contacts you want to choose, confirm it.



PS

1. You need add contacts in global setting then add alarm contacts in each FBox if you want to add alarm contacts.
2. Filling email info defaults opening email alarming function when you add alarming contacts.
3. Please pay attention alarming contacts cannot be same.

1. Email Alarming

This update added email alarming function. If the client did not update, SMS and voice alarming functions may lead to fault, and please update in time.

Using FBoxClient as email client to alarming automatic triggering email sending, it needs set email SMTP service, you can self-define receivers and email contacts, which is convenient for sending field devices faculty to concerned people in time.

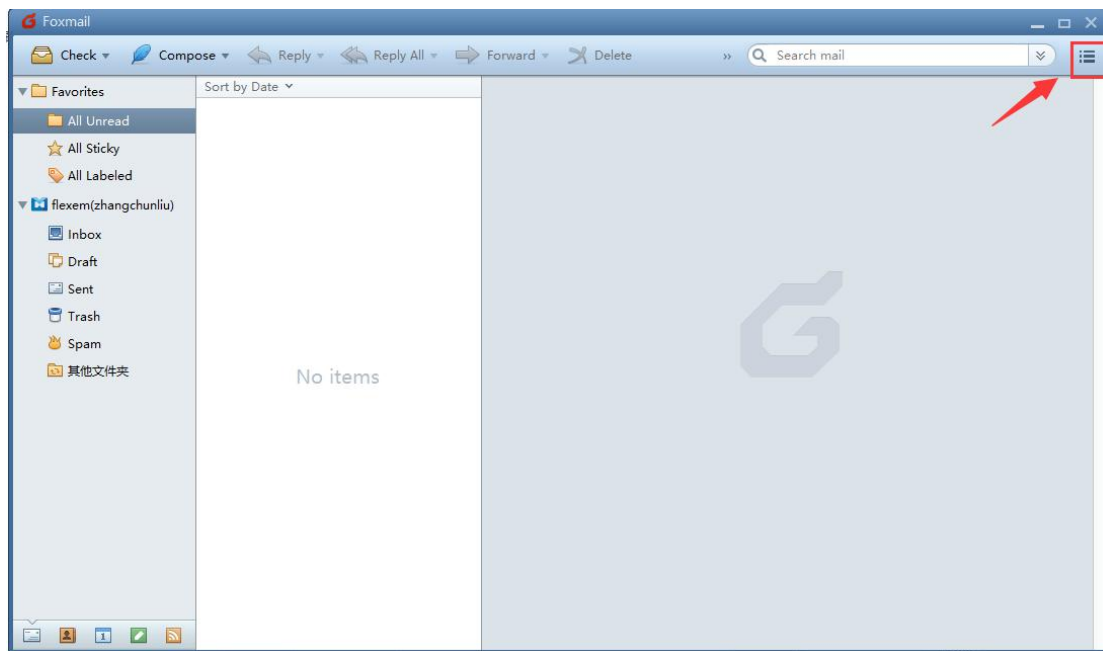
1.1 Getting Email SMTP Information

The email sending needs open SMTP service, getting sender server website, ports etc.

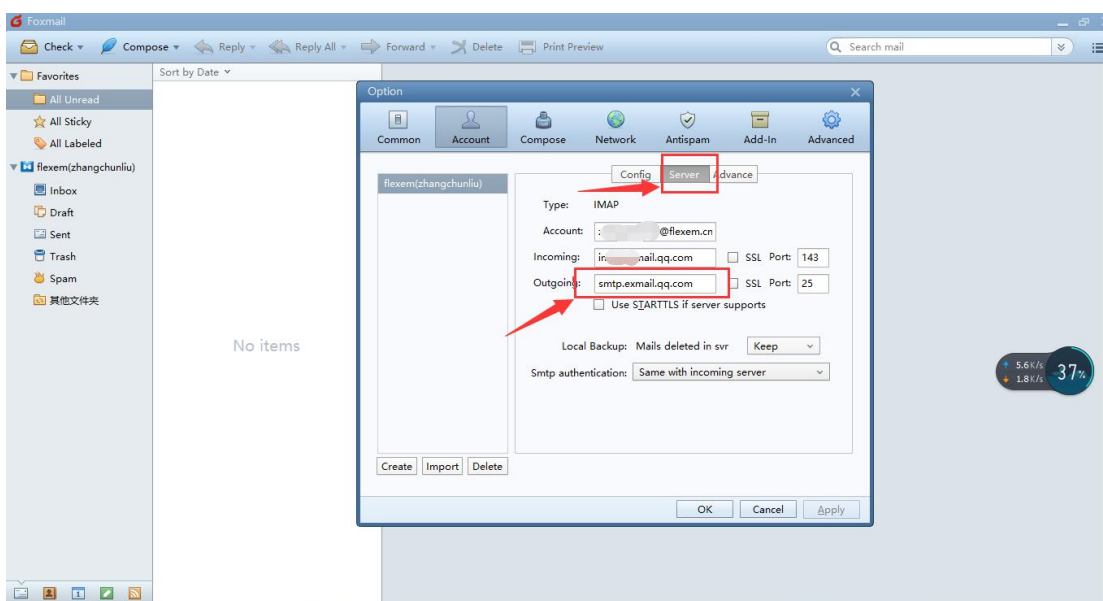
There are different opening ways to different email types, please BAIDU "email type smtp",

Next we will show how to open email.


Clicking Foxmail client right contacts list, and choose "account management" in the drag list.

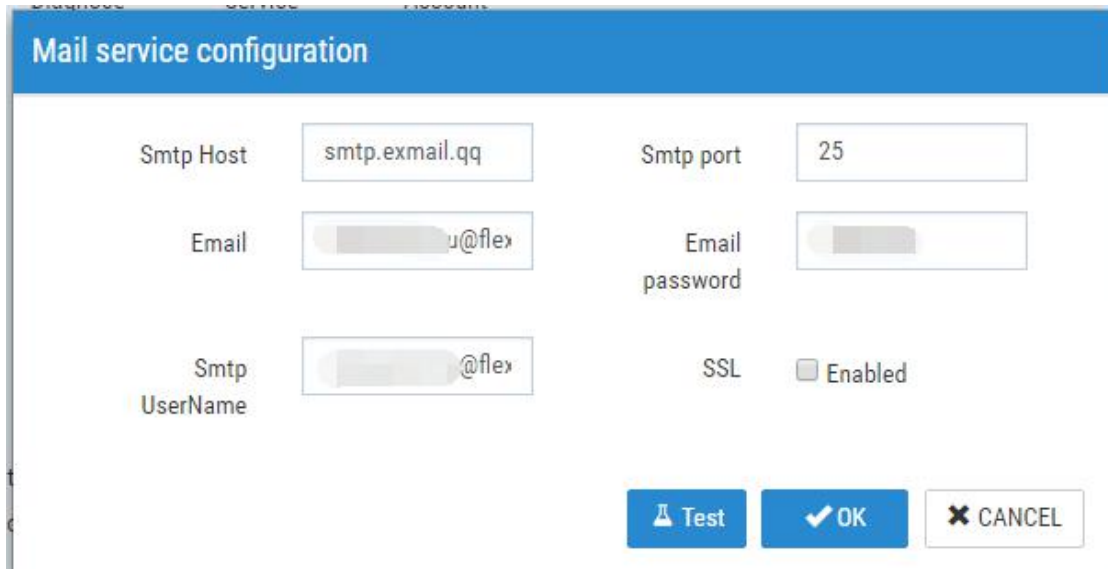
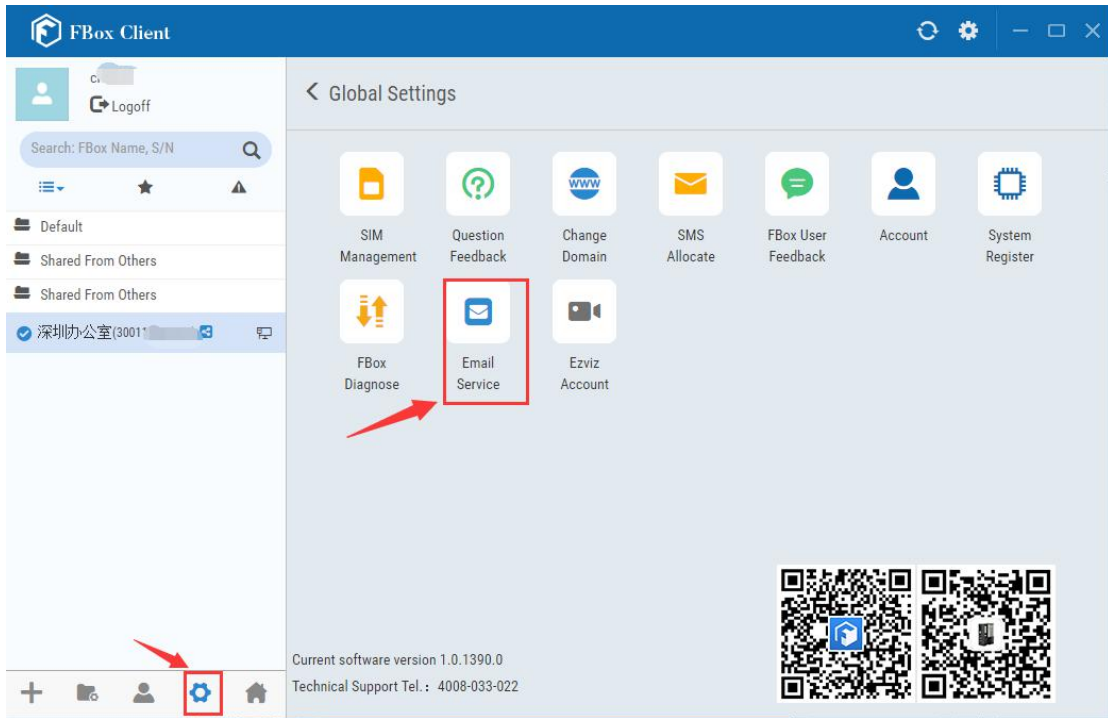


Choose "Server" option in popping up label page, and fill the sending server as "smtp.exmail.qq.com", then click "confirm" after finishing setting. Email setting then finished.



1.1 FBoxClient Setting

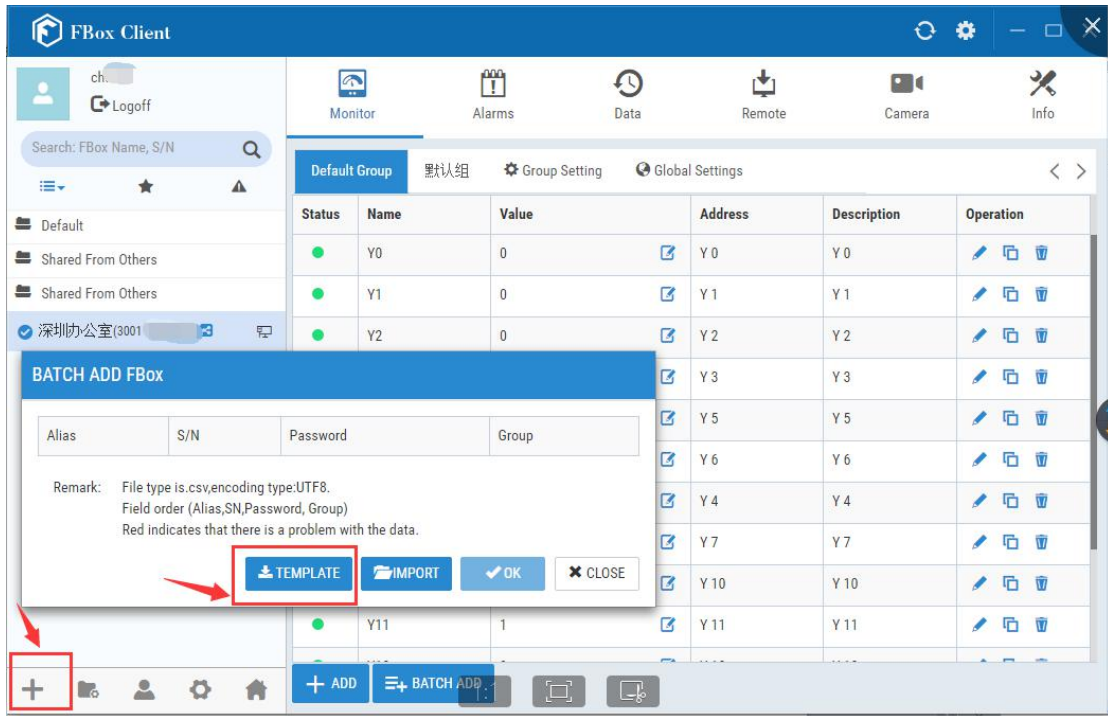
After entering "FBoxClient", click the left  option and click the "Email Service" in the right hand. Fill the exact parameters of sending mail in popping up label page, and do not click SSL in the right hand. Smt service fill correspondent sending mail Smt server website, and ports fill the correspondent ports NO with same email. Users can test email function before confirmation. When the parameters setting is correct, you can receive correspondent testing email.



Email alarming contents are users logging alarming contents.

1. Batch leading modules

Batch leading modules have been added. Click "Batch Leading" option, there will be one module. Users can download modules then can produce one ".CSV" file which can be opened and edited by EXCEL. Filling in correspondent FBox info then you can lead in FBox by batch quickly.



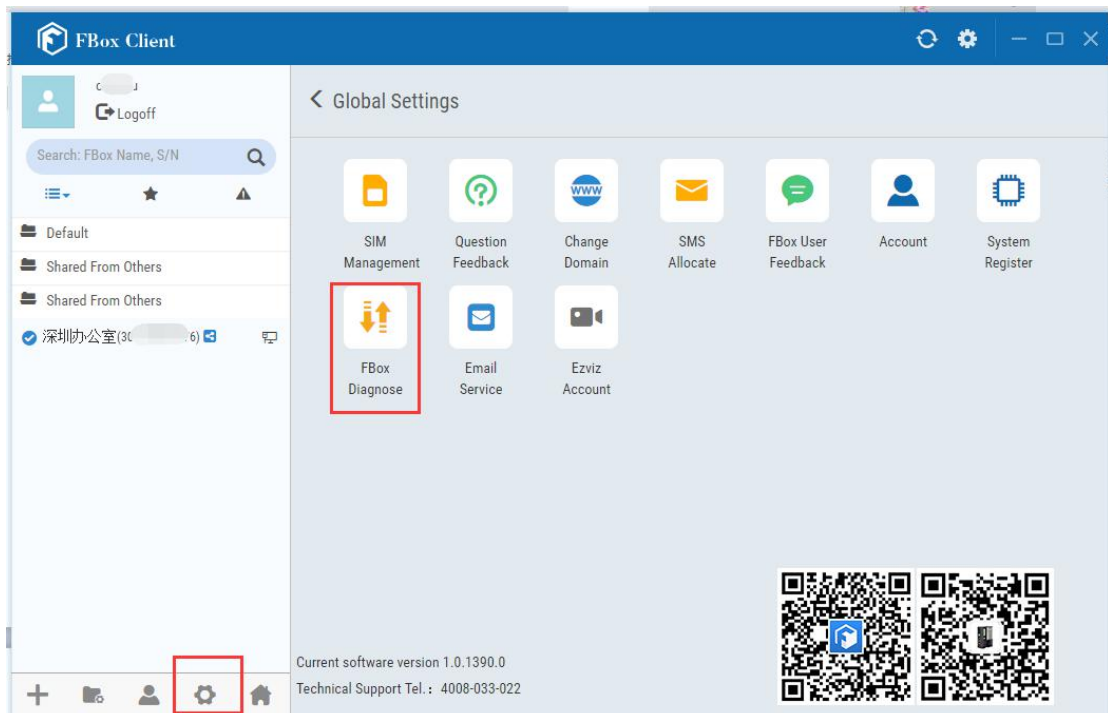
Ps: The present leading CSV format is UTF8 code, you can see error codes if you use office excel directly open. You can use library converting code format or using WPSopen directly.

1. FBox Online and Offline Records

You can check correspondent FBox online and offline records according to serial NO in the



option in the left in "FBox Diagnose". FBox serial NO binding into this account will be shown in FBox codes list, and users can choose freely.



FBox Client

ch... Logoff

Search: FBox Name, S/N

Default

Shared From Others

Shared From Others

深圳办公室(3001)

< FBox Diagnose

Begin: 2018-05-21 11:30 End(excl.): 2018-05-28 11:30

FBox group: Default FBox SN: [Search]

S/N	Status	Time
-----	--------	------

FIRST PREV NEXT LAST